

WASHER DRYER

USER MANUAL

HWD-C1000TXVE
HWD-C1200TXVE

HWD-C1000TXVE ME
HWD-C1200TXVE ME



Haier

04 - 09

10 - 15

16 - 20

TABLE OF CONTENTS

BEFORE USE

- Components 03
- Preparation..... 04
- Safety instructions... 05
- Installation 06
- Control Panel 08

USING THE APPLIANCE

- Program selection ... 10
- Consumption and technical data 11
- Washing & drying 12

MAINTENANCE

- Cleaning & Care..... 16
- Display codes..... 18
- Trouble shooting 19
- Electric Circuit Diagram 20

LEGEND

Yes

No

Optional



For your safety, any instructions in this manual with this "Warning" sign must be followed strictly.

DISPOSAL



Do not dispose of electrical appliances as unsorted municipal waste, use separate collection facilities. Contact your local government for information regarding the collection systems available. If electrical appliances are disposed of in landfills or dumps, hazardous substances can leak into the ground water and get into the food chain, damaging your health and well-being.

When replacing old appliances with new ones, the retailer is legally obligated to take back your old appliance for disposals at least free of charge.

COMPONENTS

THANKS FOR PURCHASING A HAIER PRODUCT

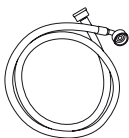
Please read these instructions carefully before using this appliance. The instructions contain important information which will help you get the best out of the appliance and ensure safe and proper installation, use and maintenance.

Keep this manual in a convenient place so you can always refer to it for the safe and proper use of the appliance. If you sell the appliance, give it away, or leave it behind when you move house, make sure you also pass on this manual so that the new owner can become familiar with the appliance and safety warnings.

ACCESSORIES

Check the accessories and literature in accordance with this list:

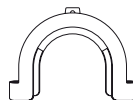
1x Inlet hose assembly



1x Bottom cover



1x Drain hose bracket



1x Service manual



3x Blanking plugs



1x Quality certificate (optional)

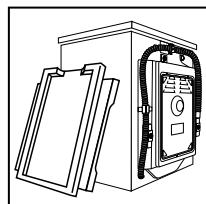


PREPARATION

PREPARING THE MACHINE

Remove all the packing material to prevent unsteadiness, including the polystyrene base.

Upon opening the package, water drops may be seen on the plastic bag and the porthole. This is normal phenomenon resulting from water tests in the factory.



DESCRIPTION

Power switch

Program knob

Door handle

Display

Porthole

Washer door

Detergent distribution drawer

Bottom trim

Drain hose

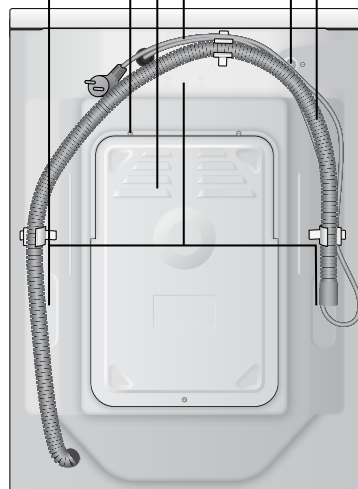
Water inlet valve

Power cord

Back cover

Back cover screws (3)

Transportation bolts (3)



This diagram may be slightly different from the layout of the washer dryer you have just purchased due to technical improvements.



SAFETY INSTRUCTIONS

BEFORE SWITCHING THE APPLIANCE ON FOR THE FIRST TIME

DO ...

- ...ensure you connect the appliance directly to a domestic mains water supply.
- ... make sure that the plug is accessible.
- ...keep surrounding areas free from accumulation of lint, dust and dirt.
- ...keep away from heat sources and direct sunlight to prevent plastic and rubber components from aging.
- ...make sure that the power cord is not caught under or in the appliance and avoid damage to the power cord.
- ...ensure that the appliance is not installed behind a locked door, sliding door or door with a hinge on the opposite side to that of the appliance so that a full opening of the appliance door is restricted.
- ...make sure that children or infirm persons do not play with the packing materials.

DO NOT ...

- ...touch or use the appliance when bare foot or with wet or damp hands or feet.
- ...use flammable detergent or dry cleaning agent.
- ...use any flammable sprays in close vicinity to the appliance.
- ...remove or insert the plug in the presence of flammable gas.
- ...install the appliance outdoors in a damp place, or in an area which may be prone to water leaks such as under or near a sink unit. In the event of a water leak allow the machine to dry naturally.
- ...place the washer/dryer directly on a carpet, or close to a wall or furniture.
- ...connect the appliance to the power supply until installation is complete.
- ... use an appliance with missing parts.
- ...dry unwashed garments in the washer/dryer.

DURING DAILY USE OF THE APPLIANCE

DO ...

- ...make sure that items soiled with cooking oil, acetone, alcohol, petrol, kerosene, spot removers, turpentine, waxes, wax removers or similar substances have been washed with hot water and an extra amount of detergent before being dried.
- ...in case the power cord is damaged, let it be replaced by the manufacturer, his service agent or other accordingly qualified persons.
- ...unplug the appliance before carrying out any maintenance or repair.
- ...hold the plug and not the electric cable when unplugging the power supply.
- ...ensure that the appliance is not used by persons with reduced physical, sensory or mental capabilities, lack of experience and knowledge, without supervision or instruction by a person responsible for their safety.
- ...make sure not to place heavy objects or sources of heat or damp on top of the appliance.

DO NOT ...

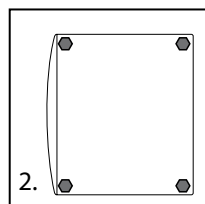
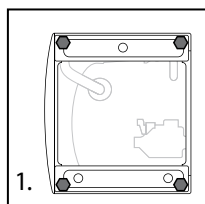
- ...touch the washer/dryer door during the washing or drying process - it gets hot!
- ...block the ventilation openings at the base of the appliance with a carpet or by covering the appliance during use.
- ...hot wash or dry foam rubber or sponge-like materials, shower caps or waterproof textiles.
- ...open the detergent distribution drawer during the wash cycle.
- ...force the washer/dryer door open. The door is fitted with a self-lock device and will not open until 2-3 minutes after the washing machine stops.
- ...open the washer/dryer door if the water level is visibly over the porthole.
- ...attempt to repair the appliance yourself. Contact the manufacturer or their approved service agent.
- ...stop the washer/dryer before the end of the drying cycle unless all items are quickly removed and spread out so that the heat is dissipated.

INSTALLATION

ADJUSTING THE BOTTOM COVER

Before removing the transportation bolts, please fix the bottom cover to the bottom of the washer dryer. Lay down the machine (fig. 1.), screw off the feet and adjust the bottom cover with the four holes corresponding to the screw holes of the feet. Then screw the feet back on through the cover and fix it securely to the bottom of the machine (fig. 2.).

It keeps out the dampness and reduces the noise.

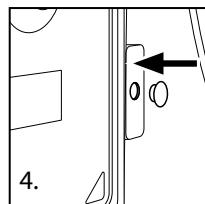
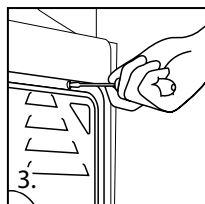
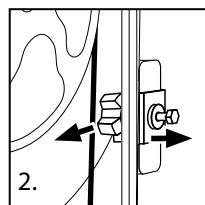
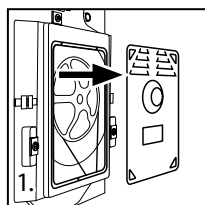


DISMANTLE THE TRANSPORTATION BOLTS

The transportation bolts are designed for damping anti-vibration components inside of the washer dryer during the transportation process.

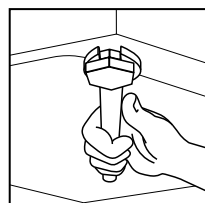
1. Remove the back cover.
2. Remove the three bolts on the rear side and take out the synthetic stabilisers from within the machine.
3. Replace the back cover.
4. Fill the holes left by the bolts with blanking plugs.

Note: Keep the transportation bolts and synthetic stabilisers in a safe place for later use.



ADJUSTING THE WASHER DRYER

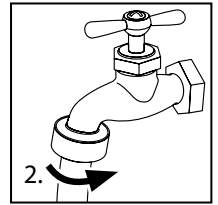
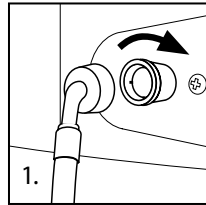
There are adjustable feet under the bottom of the washer dryer. Before use, they should be adjusted so that the machine is level. This will minimise vibrations and thus noise during use. It will also reduce wear and tear. We recommend using a spirit level to level the appliance.



INLET HOSE

1. Connect the nut on the inlet hose to the connector on the water valve.
2. Apply inlet hose to a water tap with cold, fresh water.

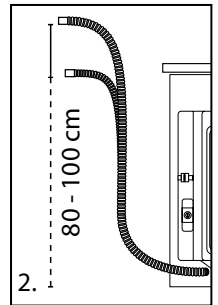
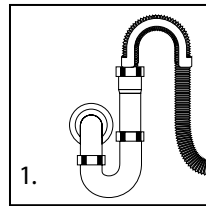
Note: Use the hose-sets supplied with the appliance. Old hose-sets should not be reused.



DRAIN HOSE

1. Use the drain hose bracket to keep the end of the drain hose retained and prevent the outflow of water. Don't extend the length of the drain hose; if an extended hose is required, please consult a serviceman.
2. The height of the drainage outlet must be 80-100cm. Fix the drain hose to the clip at the back of the washing machine to prevent it from dropping off.

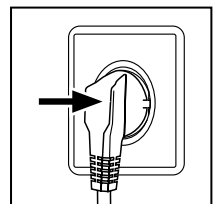
Note: The drain hoses should not be submerged in water and should be securely fixed and leak-free. If the drain hose is placed on the ground or if the pipe is at a height of less than 80cm, the washing machine will continuously drain while being filled (self-siphoning).

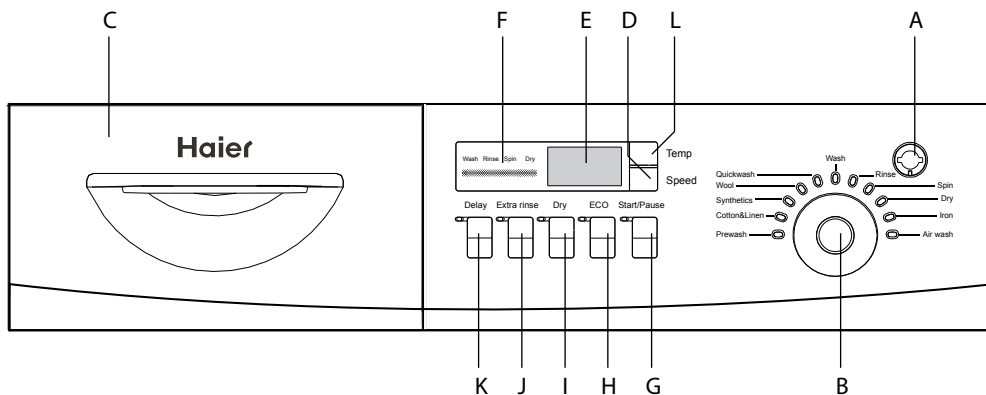


CONNECTING TO THE POWER SUPPLY

Before connecting to the power supply, check:

- The socket is adequate for the maximum power of the Washer Dryer (For safety, fuses in the power circuit should be rated for no less than 15A).
- The voltage should meet the requirement.
- The power outlets should be capable of accepting the Washer Dryer plug.
- Connect the machine to an earthed socket outlet.





- | | | | | | |
|---|-------------------------------|---|-----------------------|---|-------------------------|
| A | Power button | E | Display | I | Dry button |
| B | Program selection dial | F | Wash status indicator | J | Extra rinse button |
| C | Detergent distribution drawer | G | Start/Pause button | K | Delay button |
| D | Spin speed setting button | H | Eco button | L | Wash temperature button |

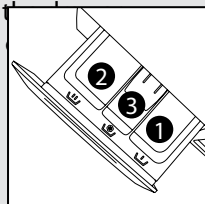
OPERATIONAL FUNCTION

A → Power switch - Press this button to turn the machine on. Press it again to switch it off.

B → Program knob - Turn the dial clockwise or anti-clockwise to select the required program. (Refer to program modes on page 10).

C → Detergent distribution drawer - Instructions are printed on the front of the drawer. Open the drawer, three compartments are available:

- Compartment 1: Pre-wash detergent
- Compartment 2: Standard washing - extra-fast washing
- Compartment 3: Softener, conditioning agent, perfume, etc.

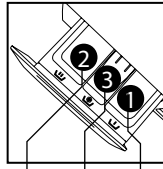


OPERATIONAL FUNCTION

D	↪ Spinspeed button	– Press this button to select the desired speed.
E	↪ Display	– Informations such as remaining wash time, temperature and speed setting and error messages are shown here.
F	↪ Wash status indicator	– This light shows the stage of the cycle in the selected program
G	↪ Start/Pause button	– After the Washer Dryer is connected to the power socket and a program is selected, press this button to start operation. Press this button again during operation to pause the program. The display screen will start blinking and the machine will be paused. Press the button again and the program will continue.
H	↪ Eco button	– Economy wash. This function automatically adjusts water consumption, wash time and heating time. The wash load range is: Prewash: 1kg-6kg; Cotton: 1kg-6kg; Synthetic: 1kg-3kg; Quick wash: 1kg-3kg; Wash: 1kg-6kg; Rinse: 1kg-6kg; Spin: 1kg-6kg
I	↪ Dry button	– Press this button, the corresponding light will go on and the appliance will dry the laundry after the last spin cycle.
J	↪ Extra rinse button	– Press this button, the overhead indicator will go on. When the Washer Dryer is at the last rinsing operation, it will not drain but start a soaking cycle. If you want to spin the laundry, press this button again, the indicator will go out and operation will resume.
K	↪ Delay button	– Press the button repeatedly before starting the program to enter the time you want the machine to be finished in, the start will delay from 0.5 to 24 hours in 30-minute intervals. After the delay is selected, press the Start/Pause button to start countdown (the time is displayed on the screen until the programme ends). Note: The delay time must be longer than the programme time, otherwise the Washer Dryer will start the wash programme immediately.
L	↪ Wash temperature button	– Touch this button and the wash temperature will be displayed on the screen. Select a suitable temperature according to the type of laundry. The corresponding light will go on.

PROGRAM SELECTION

PROGRAM MODE



- 1 Detergent compartment for prewash mode
- 2 Detergent compartment
- 3 Compartment for softener and other additives

PROGRAM	TEMPERATURE MAXIMUM	PRESET	2	3	1	RECOMMENDED LAUNDRY	DEFAULT SPIN SPEED
1 → Prewash	0° to 90°C	40°C	<input checked="" type="checkbox"/>	<input type="checkbox"/>	<input checked="" type="checkbox"/>	Heavy soiled laundry	1000 rpm
2 → Cotton & Linen	0° to 90°C	40°C	<input checked="" type="checkbox"/>	<input type="checkbox"/>	<input checked="" type="checkbox"/>	Cotton fabrics	1000 rpm
3 → Synthetics	0° to 60°C	40°C	<input checked="" type="checkbox"/>	<input type="checkbox"/>	<input checked="" type="checkbox"/>	Synthetic fabrics	800 rpm
4 → Wool	0° to 40°C	0°C	<input checked="" type="checkbox"/>	<input type="checkbox"/>	<input checked="" type="checkbox"/>	Wool fabrics	600 rpm
5 → Quickwash	0° to 40°C	40°C	<input checked="" type="checkbox"/>	<input type="checkbox"/>	<input checked="" type="checkbox"/>	Lightly soiled cotton, linen and synthetic fabrics	800 rpm
6 → Wash	0° to 60°C	40°C	<input checked="" type="checkbox"/>	<input type="checkbox"/>	<input checked="" type="checkbox"/>	Cotton, linen and synthetic fabrics	/
7 → Rinse	0°C	40°C	<input checked="" type="checkbox"/>	<input type="checkbox"/>	<input checked="" type="checkbox"/>	Cotton, linen and synthetic fabrics	800 rpm
8 → Spin	0°C	0°C	<input checked="" type="checkbox"/>	<input type="checkbox"/>	<input checked="" type="checkbox"/>	Cotton, linen and synthetic fabrics	1000 rpm
9 → Dry	The laundry is completely dry when the cycle is complete					Cotton, linen and synthetic fabrics	/
10 → Iron	The laundry is completely dry when the cycle is complete					Cotton, linen and synthetic fabrics	/
11 → Air wash	Air refresh wash for small items that need a quick refresh (e.g. school uniforms)					Cotton, linen and synthetic fabrics	/

 Yes No Optional

CONSUMPTION AND TECHNICAL DATA

CONSUMPTION TAB

The wash cycle times are intended as a guide only. The actually used time may vary due to different water pressure, initial water temperature, etc.

PROGRAM	ENERGY CONSUMPTION	WATER CONSUMPTION	WASHING TIME
→ Prewash	1,15 kw/h	61 l	133 min.
→ Cotton & Linen	1,06 kw/h	49 l	116 min.
→ Synthetics	0,86 kw/h	49 l	72 min.
→ Wool	1,10 kw/h	50 l	60 min.
→ Quick wash	0,97 kw/h	48 l	12 min.
→ Wash	0,54 kw/h	40 l	61 min.
→ Rinse	0,60 kw/h	41 l	24 min.
→ Spin	0,54 kw/h	34 l	11 min.
→ Dry	0,33 kw/h	41 l	150 min.
→ Iron	0,28 kw/h	37 l	60 min.
→ Air wash	0,12 kw/h	0 l	30 min.

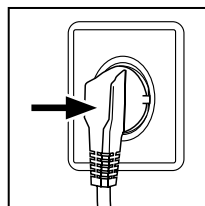
TECHNICAL DATA

	HWD-C 1000TXVE/ME	HWD-C 1200TXVE/ME
Power source	220-240V~/50Hz	220-240V~/50Hz
Max. working current (A)	10	10
Water pressure (MPa)	$0.03 \leq P \leq 1$	$0.03 \leq P \leq 1$
Washing power (W)	200	200
Spinning Power (W)	350	450
Spinning speed (r/min)	1000	1200
Max. load (kg)	6	6
Washing programs	11	11
Water heating power (W)	1800	1800
Dry heating power (W)	1000	1000
Dimensions (HxDxW mm)	850 x 590 x 595	850 x 590 x 595
Net weight (kg)	82	82
Washing noise (dBA)	54,3	54,3
Spinning noise (dBA)	71,8	71,8

WASHING & DRYING

POWER SUPPLY

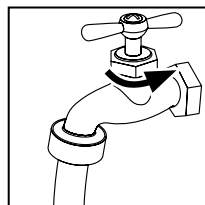
Connect the washer dryer to the power supply (220V to 240V ~ / 50Hz).



WATER CONNECTION

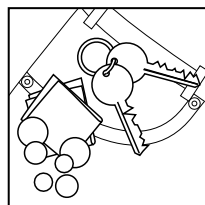
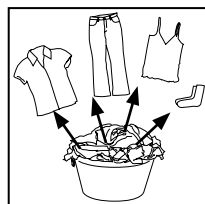
Turn on the tap. The water must be clean and clear.

Note: Before use, check for leakage in the joints between the tap and the inlet hose by turning on the tap. Do not use the appliance until the hoses are properly fixed.



PREPARING THE LAUNDRY

- Sort out clothes according to fabric (cotton, synthetics, wool or silk) and to how dirty they are.
- Separate white clothes from coloured ones. Wash them first by hand to check if they fade or run.
- Empty pockets from objects like lighters and matches, keys, coins etc and remove the harder decorative objects (e.g. brooches).
- Garments without hems, underwear, finely woven textiles such as fine curtains are to be put into wash bag (it is better not to wash them in a washing machine).
- Close zippers and hooks, make sure the buttons are sewn on tightly and place small items such as socks, belts, bras, etc. in the wash bag.
- Unfold large pieces of fabrics such as bed sheets, bed spreads, etc.
- Turn shirts inside out.



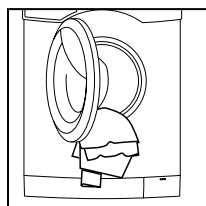
PLEASE NOTE

This Washer Dryer is for domestic use only. Do not use it for purposes other than that for which it was designed. Follow the instructions given on the label of each garment and wash only machine-washable garments. Do not dry garment that has been cleaned with industrial chemicals.



LOADING THE MACHINE

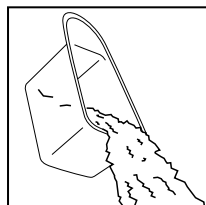
- Open the washer door, put in the laundry piece by piece. Close the door tightly.
- When first using the Washer Dryer, let it run empty without detergent for one quick wash cycle to prevent the laundry from being tainted by oil or dirty water from the Washer Dryer.
- Do not overload the Washer Dryer.



SELECTING DETERGENT

The washing efficiency and the performance is determined by the quality of detergent used. Special non-foaming detergent produces good washing results. Use specific detergents for synthetic and woollen goods. Do not use dry cleaning agents such as trichloroethylene and similar products.

Note: Do not add more detergent than needed. Please follow the dosage recommendation on the detergent package.

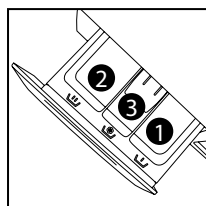


ADDING DETERGENT

Slide out the detergent drawer and put the required detergent and softening agent into the corresponding compartments. Push back the drawer gently. (Refer to the instructions on the drawer)

Caution:

- For pre-washing program, detergent should be added to both compartments 1 and 2. For other programs, do not add detergent to compartment 1.
- If liquid detergent will be used, please fill into the dosage cup and place it directly into the drum together with the laundry.
- Do not overuse softener; otherwise, it will damage the artificial fibers.

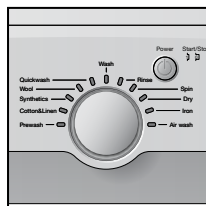


SELECTING PROGRAM

To get the best washing results, an appropriate washing program should be selected according to the laundry type. Please turn the program knob clockwise to select the right program.

SELECTING FUNCTIONAL

Select the required options. (Refer to the "Control panel" pages 08 and 09). Otherwise keep all the buttons deselected. If you wish to dry your laundry directly after the wash cycle is finished, please press the "Dry"-button.



WASHING & DRYING

SETTING WASHING TEMPERATURE

Press and hold down the temperature button until the desired temperature is selected or the symbol * for no water heating.

SETTING SPIN SPEED

Press and hold down the speed button until the desired speed is selected or the symbol "—" is selected for no spin. See "Operational functions" on the "Control panel" pages (08 and 09) for selecting temperature and spin speed. It is advisable to select the recommended value.

WASHING

Press the Start/Pause button. The Washer Dryer will operate according to the pre-set programs. The Washer Dryer will stop operation automatically when a washing cycle ends. The "End" sign will appear on the display. Open the washer door and take out the laundry.

DRYING

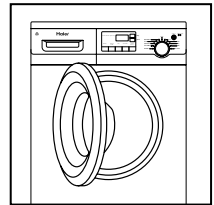
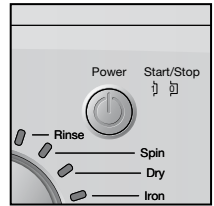
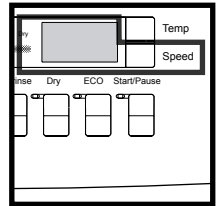
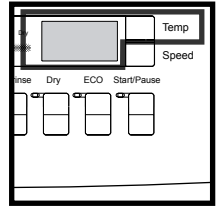
If you wish to dry wet laundry, please select one of the drying programs by turning the program knob. (Refer to the "Control panel" pages 08 and 09).

AFTER USING THE APPLIANCE












Turn off the water supply and unplug the power cord. Open the washer door to prevent formation of moisture and odours. Let the door open when not used.

TIPS FOR SAVING ENERGY

1. Collect clothes for one full wash load.
2. Avoid overloading the washer dryer.
3. Pre-wash only heavily soiled clothes.
4. Reduce the amount of detergent or choose the speed up wash programs for slightly soiled clothes.
5. Choose a proper washing temperature. Modern detergents can wash with very good results already in lower temperature than 60°C. Only use higher temperature than 60° for heavily soiled laundry.
6. Follow the dosage recommendation on the detergent package to avoid using too much detergent.
7. Softening agent makes clothes feel softer and easier to iron.
8. Adding fabric conditioner will also get rid of static condensation to make ironing easier.



CARE CHART

 Resistant material	 Bleachable in cold water	 Don't dry clean
 Delicate fabric	 Do not bleach	 Dry flat
 Washable at 95°C	 Iron at 200°C	 Hung to dry
 Washable at 60°C	 Iron at 150°C	 Dry on clothes hanger
 Washable at 40°C	 Iron at 100°C	 Tumble dry, normal heat
 Washable at 30°C	 Don't iron	 Tumble dry, reduced heat
 Hand wash	 Dry cleaning (any solvent)	 Don't tumble dry
 Dry clean only	 Dry cleaning (perchloride)	
 Wool Seal	 Dry cleaning (aviation fuel)	

WASH LOAD

Cotton: 6 kg	Synthetic: 3 kg	Delicate: 2 kg	Quick: 3 kg
--------------	-----------------	----------------	-------------

LOAD REFERENCE

Bed sheet (single)	Cotton	Approximately 800g
Blanket	Wool	Approximately 3000g
Blended fabric clothes	/	Approximately 800g
Jackets	Cotton	Approximately 800g
Jeans	/	Approximately 800g
Overalls	Cotton	Approximately 950g
Pyjamas	/	Approximately 200g
Shirts	/	Approximately 300g
Socks	Blended fabrics	Approximately 50g
T-Shirts	Cotton	Approximately 300g
Underwear	Blended fabrics	Approximately 70g

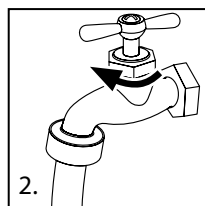
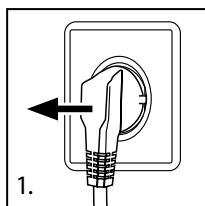
PLEASE NOTE

The final part of a drying cycle is a cooling cycle without heat to ensure that the dried items are left at a temperature that keeps them undamaged.

CLEANING & CARE

AFTER WASHING

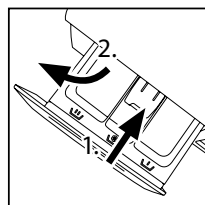
Turn off the water supply and pull out electricity plug after each wash. Open the washer/dryer door to prevent formation of moisture and odours. If the washing machine is left idle for a long period, drain the water in the machine and replace the drain hose.



CLEANING THE DETERGENT DRAWER

Clean the detergent distribution drawer regularly.

Swing out the drawer, flush it clean with water and then replace it.



CLEANING THE MACHINE

Unplug the machine during cleaning and maintenance. Use a soft cloth dampened with soap liquid to clean the machine case and rubber components. Do not use organic chemicals or corrosive solvents.

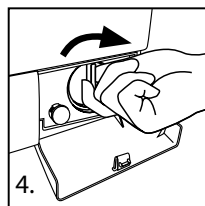
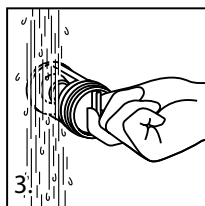
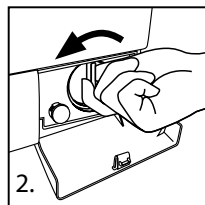
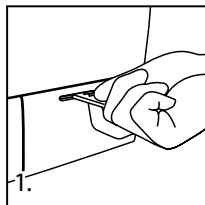
CLEANING THE FILTER

Clean the filter once a month:

1. Pull out the bottom cover with thin objects or tools carefully.
2. Remove the filter by turning counterclockwise.
3. Flush the filter clean with running water.
4. Replace the filter by turning clockwise and remount the cover.

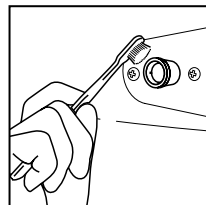
Caution:

The filter must be in place, or it may lead to leakage.



WATER INLET AND INLET FILTER

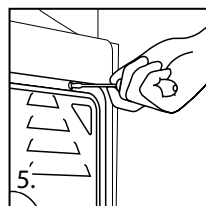
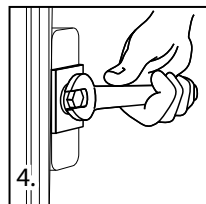
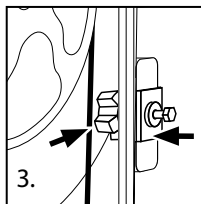
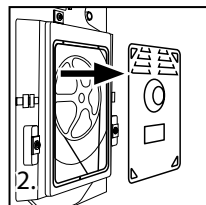
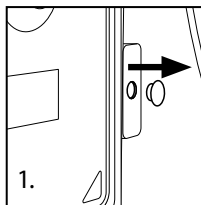
To prevent blockage to the water supply by ingress of foreign substances, clean the water inlet and inlet filter regularly.



MOVING THE MACHINE

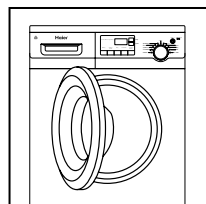
If the machine is to be moved to a distant location, replace the transportation locks removed before installation to prevent damage as shown below.

1. Remove the blanking plugs.
2. Remove the back cover
3. Insert the synthetic stabilisers and the transportation bolts.
4. Tighten the bolts with a spanner.
5. Replace the back cover.



LONG PERIODS OF DISUSE

If the washer/dryer is left idle for a long period, pull out the electrical plug and turn off the water supply. Open the washer/dryer door to prevent formation of moisture and odours. Let the door open while not used.



DISPLAY CODES

DISPLAY CODES AND SPECIAL FUNCTI

CODES	CAUSES	SOLUTIONS
Err1	→Washer door is not properly shut.	– Shut the door properly
Err2	→Drainage error. Water is not emptied within 4 minutes.	– Clean the filter and check the drain hose for blockage. Remove filter in case any water remains in the unit.
Err3	→ Temperature sensor error.	– Please contact the Service Center.
Err4	→ Heater error or laundry overload. The set temperature is not reached within specified time. (Appears at the end of a cycle).	– Reduce load and start washing again. – Please contact the Service Center.
Err5	→ Water level not met within 8 minutes.	– Check the tap and the water pressure.
Err6	→ Dehumidification/heating error.	– Please contact the Service Center.
Err7	→ Motor overheat error.	– Please contact the Service Center.
Err8	→ Water overflow.	– Please contact the Service Center.
Err9	→ Error of the dryer temperature sensor.	– Please contact the Service Center.
Err10	→ Error of the water level sensor.	– Please contact the Service Center.
Err12	→ Error of the dryer water level sensor.	– Check whether the clothes are dry or not and whether there is water still in the drum. If so, allow excess humidity to escape from the appliance and dry the drying cycle again.
Err13	→ Dryer heater error.	– Please contact the Service Center.
unb	→ Laundry is unevenly distributed.	– Redistribute laundry to balance the drum.
EUAr	→ Communication error.	– Please contact the Service Center.
1:16	→ Status information: remaining program time is 1 hour and 16 minutes.	
0:01	→ Status information: remaining program time is 1 minute.	
60°C	→ Status information: Wash temperature is 60°C.	
--°C	→ No heat (cold wash).	
0	→ No spin.	
800	→ Status information: Spin speed 800 rpm.	
L-1	→ Manually selected code when laundry weight is less than 1kg.	
L-A	→ Manually selected code when drum is nearly full.	
End	→ Program is finished.	

- Control panel lock function: Press the "Delay" and the "Start/Pause" buttons simultaneously for 3 seconds after starting a program. It can no longer be changed by operating buttons or knobs. The washing machine emits an audible signal while the control panel is locked. To unlock, press the "Delay" and "Start/Pause" buttons again for 3 seconds.
- Power-off memory function: In case of a abrupt power failure or the need to cut off the power during a program cycle, the present settings will be saved and the preset operation will resume when the power is on again.

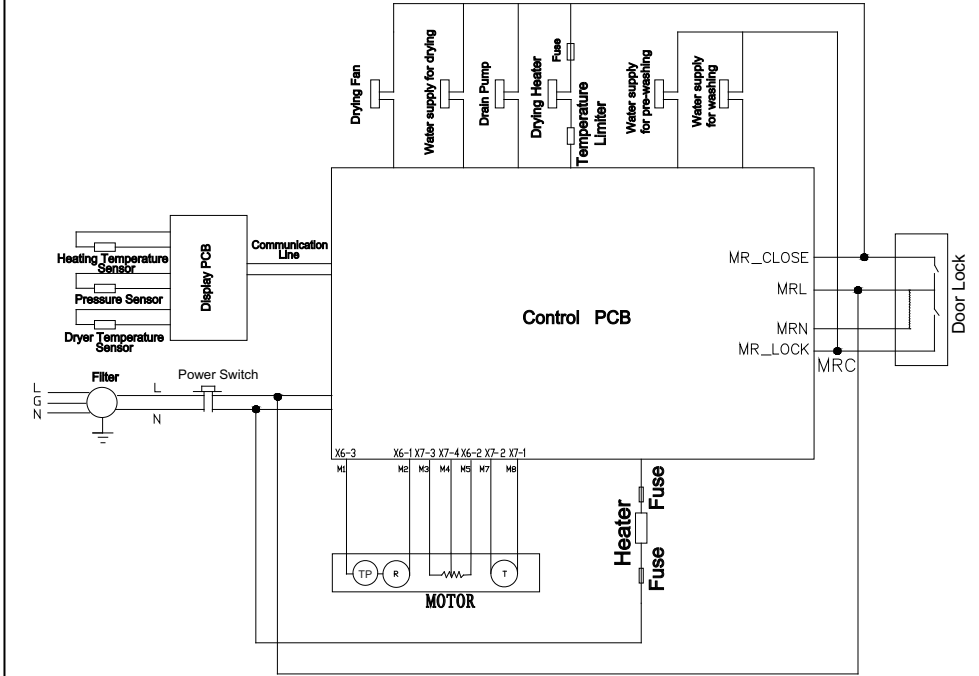
TROUBLESHOOTING

TROUBLESHOOTING

In the unlikely event of difficulties with your appliance please follow the troubleshooting guide below. If the problem persists, contact the retailer if the machine is still within the guarantee period. If the appliance is out of guarantee, contact an approved service agent on 08450253025. If an error code is displayed, please refer to the error code guide below.

PROBLEMS	POSSIBLE CAUSES	POSSIBLE SOLUTIONS
Washer/Dryer fails to operate.	<ul style="list-style-type: none"> → Poor connection to the power supply. → Power failure. → The washer door is not properly closed. → Machine has not been switched on. 	<ul style="list-style-type: none"> → Check connection to the power supply. → Check the power supply. → Make sure the washer door is closed properly. → Make sure the machine is switched on.
Washer/Dryer cannot be filled with water.	<ul style="list-style-type: none"> → Water tap is not turned on. → Water pressure is less than 0,03 Mpa. → The inlet hose is kinked. → Water supply failure. → The program knob is not properly set. → The washer door is not properly closed. 	<ul style="list-style-type: none"> → Turn water tap on. → Check water pressure. → Check the inlet hose for bends. → Ensure the water supply. → Make sure the program knob is properly set. → Make sure the washer door is closed properly.
Machine is continually filling and draining.	<ul style="list-style-type: none"> → The height of the drain hose is below 80 cm. 	<ul style="list-style-type: none"> → Make sure the height of the drain hose is within 80 - 100 cm.
Drainage failure.	<ul style="list-style-type: none"> → Drain hose is blocked. → Drain hose end is more than 100 cm above the floor level. 	<ul style="list-style-type: none"> → Unblock the drain hose. → Make sure the drain hose end is less than 100 cm above floor level.
Strong vibration while spinning.	<ul style="list-style-type: none"> → Not all transportation bolts have been removed. → Washer dryer is located on an uneven surface or is not level. → Machine is overloaded. 	<ul style="list-style-type: none"> → Check if all transportation bolts have been removed. → Make sure the washer dryer is on an even surface and levelled. → Reduce amount of laundry in the drum.
Operation stops before completing wash cycle.	<ul style="list-style-type: none"> → Water or electricity failure. 	<ul style="list-style-type: none"> → Check the power supply.
Operation stops for a period of time.	<ul style="list-style-type: none"> → Washer dryer gives an error message. 	<ul style="list-style-type: none"> → Wait until cycle is complete → See display codes on previous page.
Excessive foam in the drum.	<ul style="list-style-type: none"> → The detergent is not a low-foaming type or for manual wash. → Excessive use of detergent. 	<ul style="list-style-type: none"> → Check if your detergent is appropriate. → Reduce amount of detergent used.

ELECTRIC CIRCUIT DIAGRA



Haier

HaierEuropeTradingS.r.l.
ViaDeCristoforis 12
21100Varese - Italy

Tel + 39 0332 24511
Fax +39 0332 245146
Email: haieret.srl@haiereurope.com